

No portion of this property lies within a Flood Hazard Zone.

No encroachments were noted.

Curve Data (Curve #1):

Radius: 1,250.68'
Arc Length: 149.93'
Curve Segment: 0.00 AC

Curve Data (Curve #2):

Radius: 1,250.68'
Arc Length: 56.00'
Curve Segment: 0.00 AC

Curve Data (Curve #3):

Radius: 456.53'
Arc Length: 99.85'
Curve Segment: 0.00 AC

Field Data:

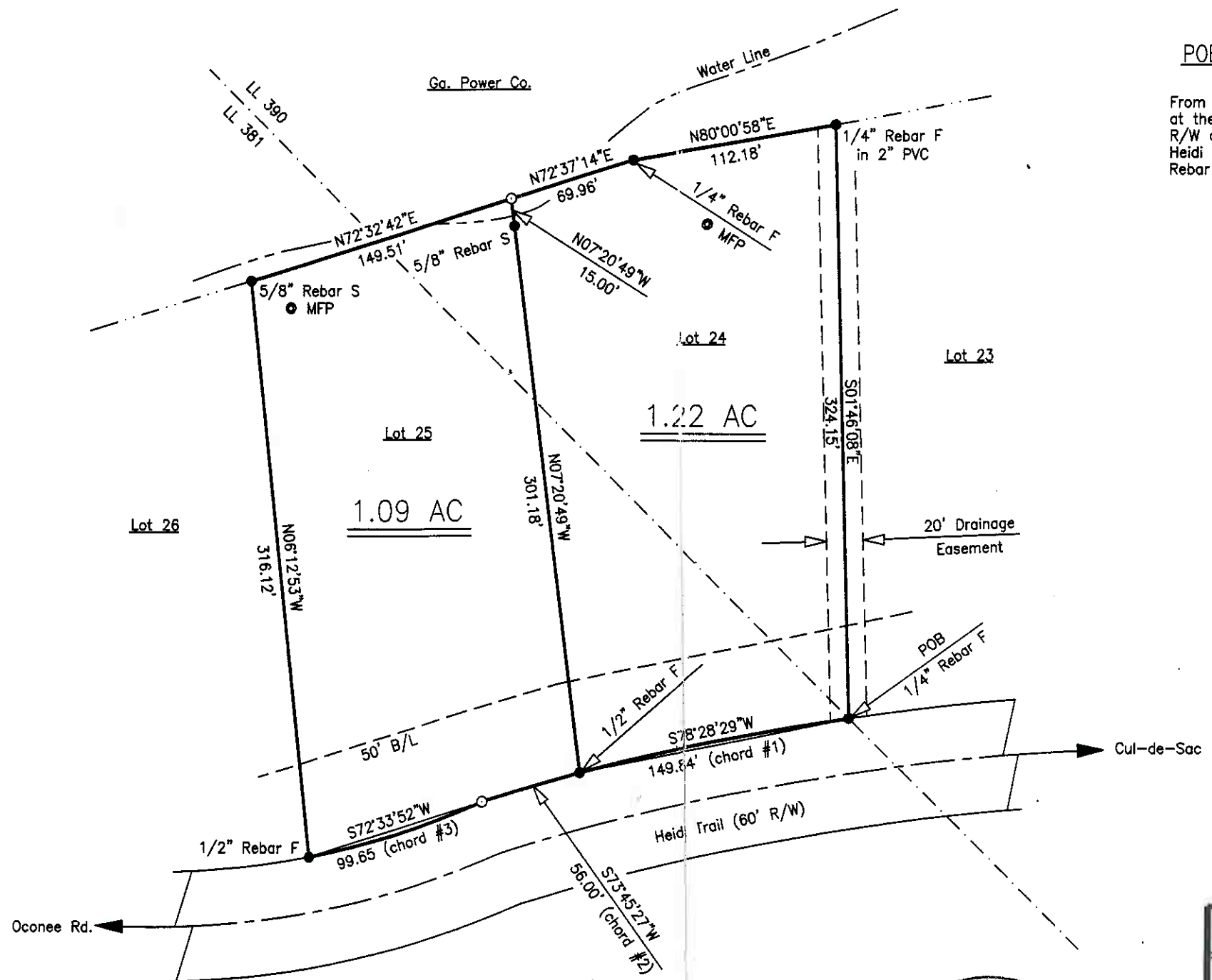
Closure: 1' per 18,000'
Angular Error: 2" per angle point
Adjusted by: Compass Rule

Plot Closure:

1' per 400,000'

Equipment used:

TOPCON GTS 212



POB - POINT OF BEGINNING

From the intersection of the Cul-de-Sac at the end of Heidi Trail and the North R/W of Heidi Trail, follow the R/W of Heidi Trail West 2,190.52' to a 1/4\"/>



Survey For:
Marguerite G. Copeland
Lots 24 & 25, Oconee Shores S/D Land Lots 381 & 390 4th Land Dist. 279th GMD Morgan Co., Georgia
Scale: 1" = 75' Date: June 10, 1999
R. V. Baldwin PLS#2655 PE#10842 Baldwin Engineering Services 150 W. Washington St. Madison, Georgia 30650 706-342-0191

