

50 PERCENT OF THIS PROPERTY LIES WITHIN A FLOOD HAZARD ZONE.
 SEE FIG. 10 TO THIS PANEL, 131100200 A DATED 07/15/2002.
 NO ENCUMBRANCES NOTED.

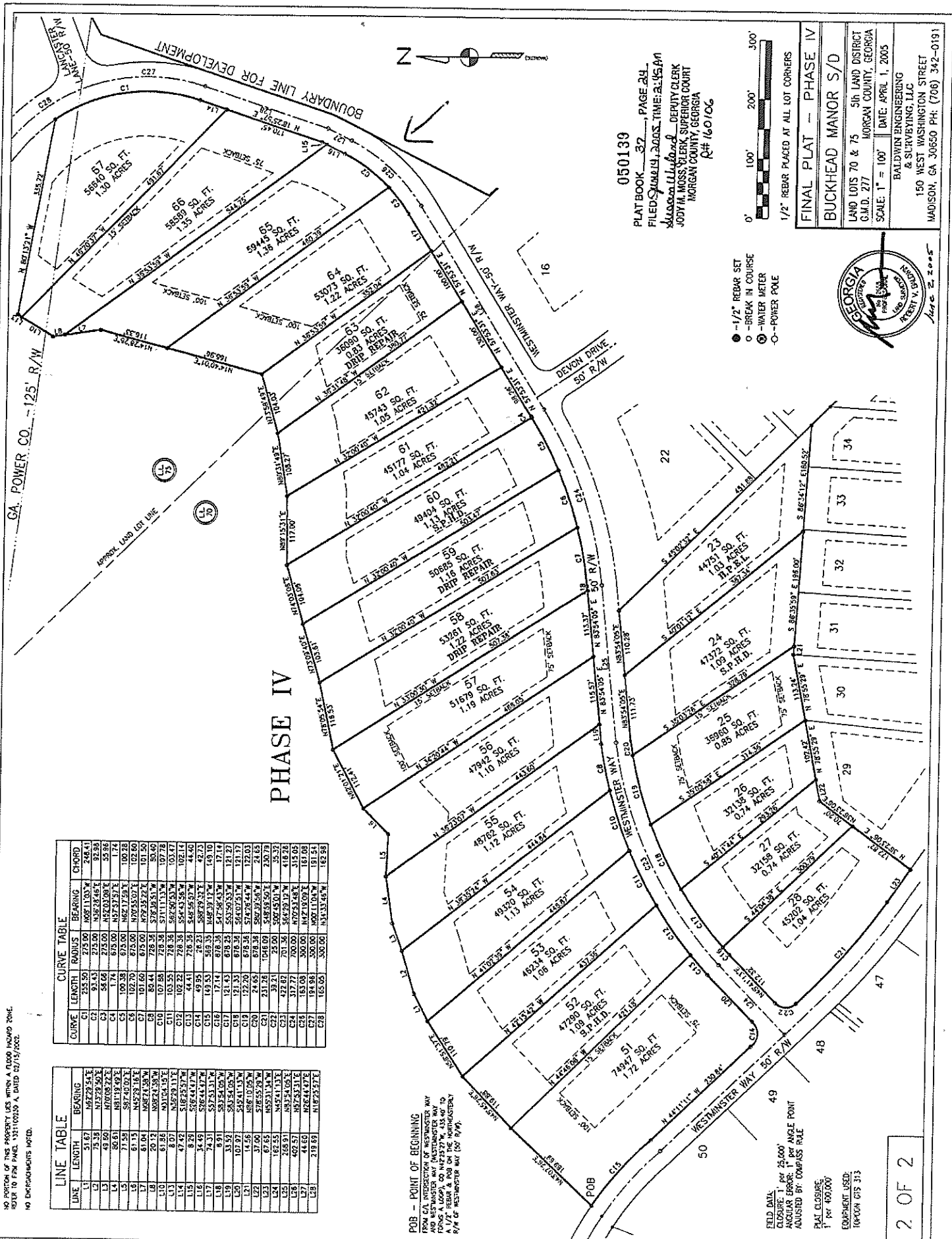
LINE	LENGTH	BEARING
L1	51.67	S82°17'33.4"E
L2	75.38	N70°28'30.3"E
L3	49.60	N70°08'27.2"E
L4	60.61	N81°19'49.2"E
L5	71.58	S82°40'02.2"E
L6	102.70	N75°00'47.57"E
L7	61.04	N85°29'18.2"E
L8	72.72	N82°21'38.7"E
L9	67.72	N91°25'15.2"E
L10	44.60	S102°23'27.2"E
L11	47.42	S102°23'27.2"E
L12	8.29	S76°44'47.7"E
L13	34.45	S76°44'47.7"E
L14	74.31	S52°53'13.1"E
L15	6.91	S93°54'09.7"E
L16	33.52	S93°54'09.7"E
L17	107.21	S42°41'13.7"E
L18	17.60	N86°19'09.7"E
L19	17.60	N86°19'09.7"E
L20	67.65	N45°14'13.2"E
L21	24.42	N45°14'13.2"E
L22	62.51	N62°53'13.1"E
L23	44.60	N62°53'13.1"E
L24	219.89	N162°23'27.2"E

CURVE	LENGTH	RADIUS	BEARING	CHORD
C1	255.50	225.00	N82°11'03.3"E	248.41
C2	93.43	225.00	N52°24'46.1"E	92.93
C3	54.06	225.00	N52°02'00.8"E	55.86
C4	17.74	675.00	N52°37'57.1"E	17.74
C5	100.38	675.00	N67°17'59.1"E	100.38
C6	102.70	675.00	N75°00'47.57"E	102.70
C7	61.04	675.00	N85°29'18.2"E	61.04
C8	72.72	675.00	N91°25'15.2"E	72.72
C9	107.88	728.38	N62°40'53.3"E	103.47
C10	103.55	728.38	N54°43'58.7"E	102.14
C11	44.41	728.38	N45°49'50.7"E	44.40
C12	49.55	569.33	N68°29'21.2"E	47.73
C13	193.53	569.33	N68°29'21.2"E	149.10
C14	17.14	678.35	S47°56'43.7"E	17.14
C15	15.35	678.35	S53°50'53.7"E	15.35
C16	107.21	678.35	S42°41'13.7"E	107.21
C17	17.60	678.35	S86°19'09.7"E	17.60
C18	17.60	678.35	S86°19'09.7"E	17.60
C19	24.65	678.35	S45°14'13.2"E	24.42
C20	24.65	678.35	S45°14'13.2"E	24.42
C21	231.26	1046.09	S48°48'50.7"E	230.79
C22	39.21	25.00	S00°45'01.7"E	39.33
C23	37.87	701.36	S67°29'17.7"E	419.26
C24	37.77	700.00	N07°53'48.7"E	319.26
C25	185.08	300.00	N67°19'09.7"E	191.54
C26	194.98	300.00	N67°19'09.7"E	191.54
C27	185.08	300.00	N34°33'46.7"E	185.99

POB - POINT OF BEGINNING
 FROM C.A. INTERSECTION OF WESTMINSTER WAY
 AND WESTMINSTER WAY (WESTMINSTER WAY
 BEING A LOOP, CO N47°27'27"W, 434.40' TO
 R/W OF WESTMINSTER WAY FROM THE INTERSECTION
 R/W OF WESTMINSTER WAY (S. 1994).

FIELD DATA:
 CLOSURE 1" PER 25,000'
 ANGULAR ERROR 1" PER ANGLE POINT
 ACQUIRED BY COMPASS RALE

P.L.M. CLOSURE
 1" PER 400,000'
 EQUIPMENT USED:
 TRACON GPS 313



050139
 PLAT BOOK 37, PAGE 24
 FILED JANUARY 2005 TIME 2:45 PM
 JUDITH M. MOSS, CLERK, DEPUTY CLERK
 JUDITH M. MOSS, CLERK, SUPERIOR COURT
 MORGAN COUNTY, GEORGIA
 R# 160106

0' 100' 200' 300'
 1/2" REBAR PLACED AT ALL LOT CORNERS

FINAL PLAT - PHASE IV
 BUCKHEAD MANOR S/D
 LAND LOTS 70 & 75 5th LAND DISTRICT
 C.M.D. 277 MORGAN COUNTY, GEORGIA
 SCALE: 1" = 100' DATE: APRIL 1, 2005
 BALDWIN ENGINEERING
 & SURVEYING LLC
 150 WEST WASHINGTON STREET
 MADISON, GA 30650 PH: (706) 342-0191



- - 1/2" REBAR SET
- - BREAK IN COURSE
- ⊙ - WATER METER
- ⊖ - POWER POLE